

Biology Central Laboratory

Usage Regulations:

The Biology Central Laboratory is accessible to Department of Biology members and students at all times. Consultation with scientists is available during office hours. Users are responsible for any damages incurred when using the Biology Central Laboratory outside regular hours.

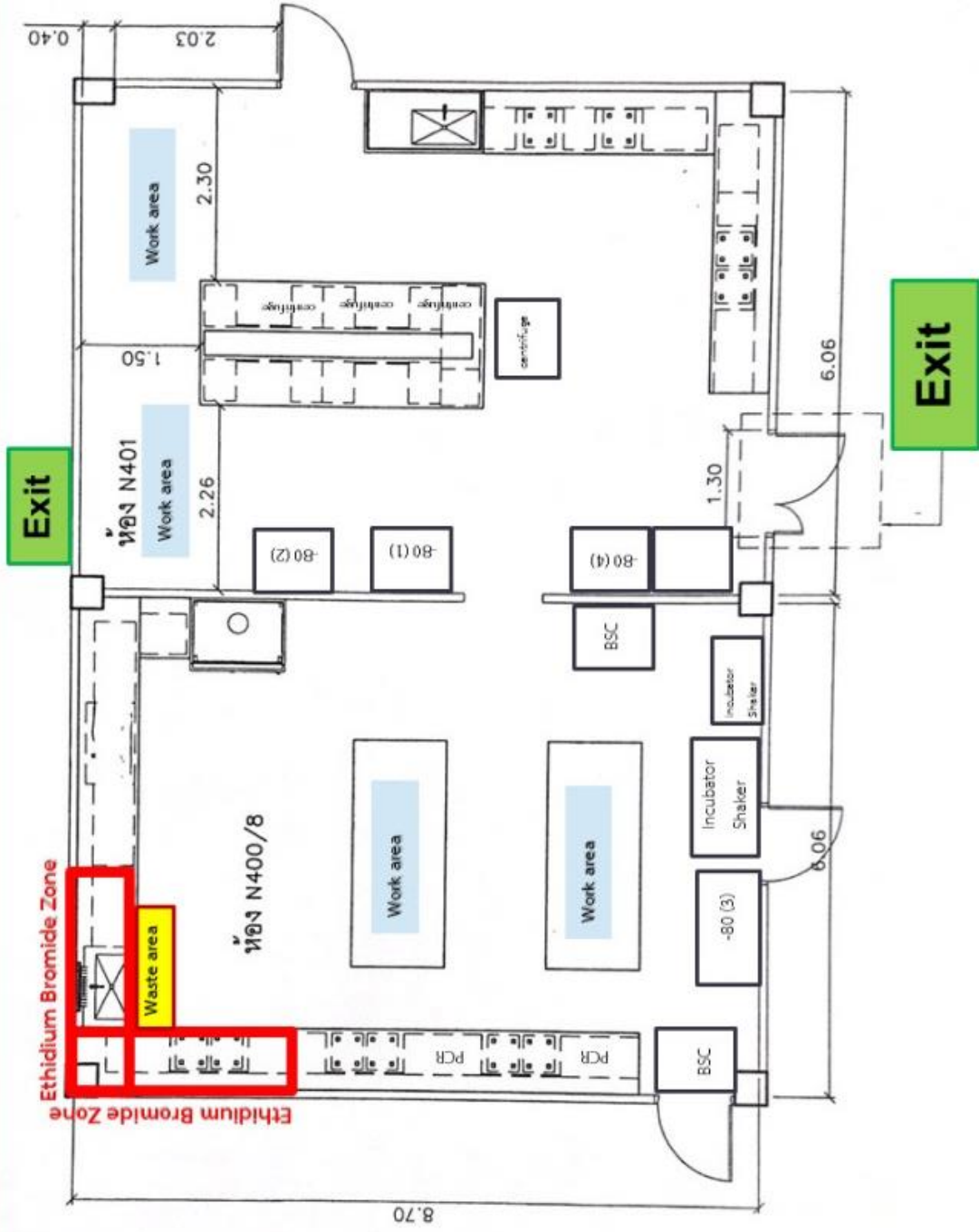
Note: Non-department personnel and students not registered in Biology courses lack the right to use Biology Central Laboratory equipment. If needed, external individuals can request access through the responsible faculty member and notify the Biology Central Laboratory Committee in Room N401. Forms are available upon request.

Guidelines for Biology Central

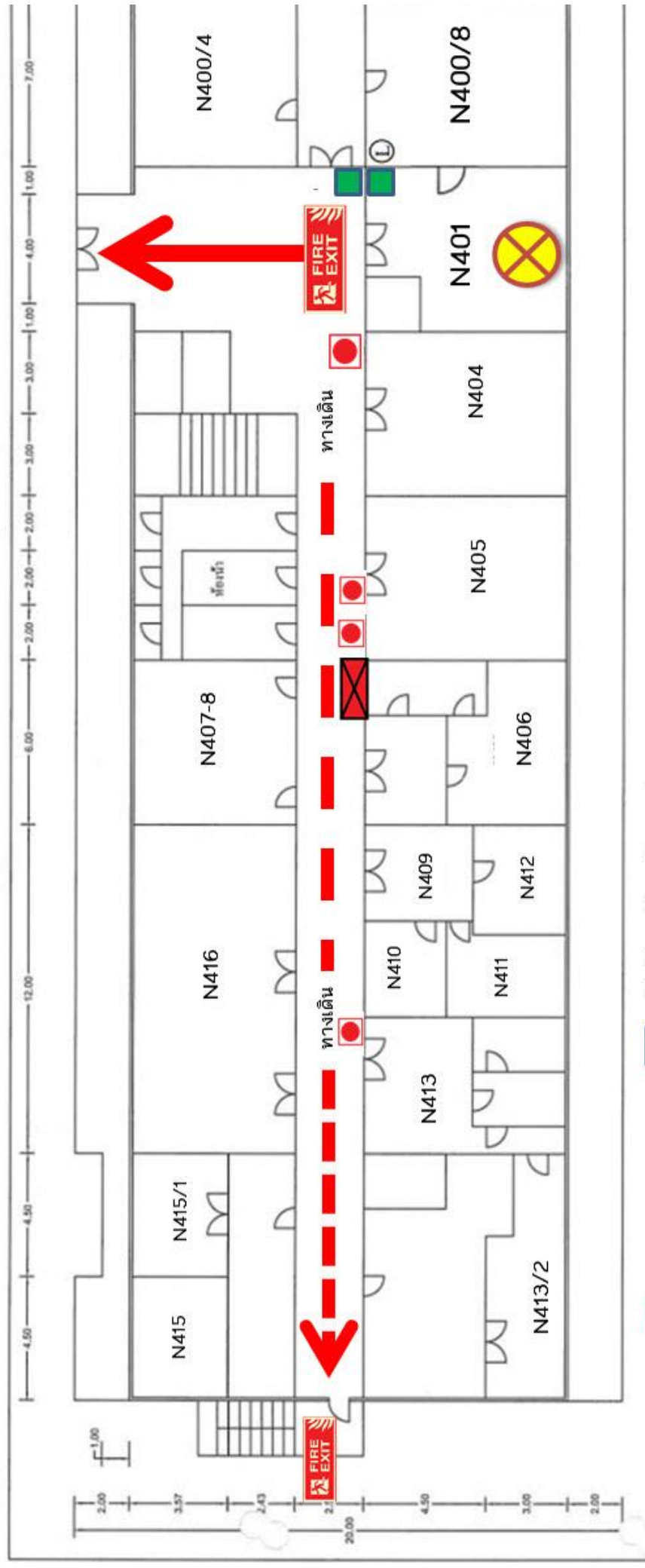
Laboratory Usage:






- 1. Familiarize yourself with the laboratory layout for efficient equipment location.**
- 2. Identify emergency exit routes for quick evacuation during emergencies.**
- 3. Wear closed-toe shoes to protect against chemical spills.**
- 4. Dress appropriately, including wearing a lab coat during experiments.**
- 5. Bring only essential items into the laboratory; eating and drinking are prohibited.**
- 6. Avoid running or playing in the laboratory to prevent accidents or disturbance of chemical containers, minimizing the risk of spills and harm to oneself and others.**

ผังห้องปฏิบัติการ BIOLOGY CENTRAL LABORATORY



ผังอาคาร N ตึกชีววิทยาใหม่ ชั้น 4 Emergency Evacuation Plan



-  You are here
-  ทางหนีไฟ
-  ถังดับเพลิงชนิด Halon
-  ถังดับเพลิงชนิด CO2
-  ตู้ดับเพลิง (Fire Hose Cabinet)

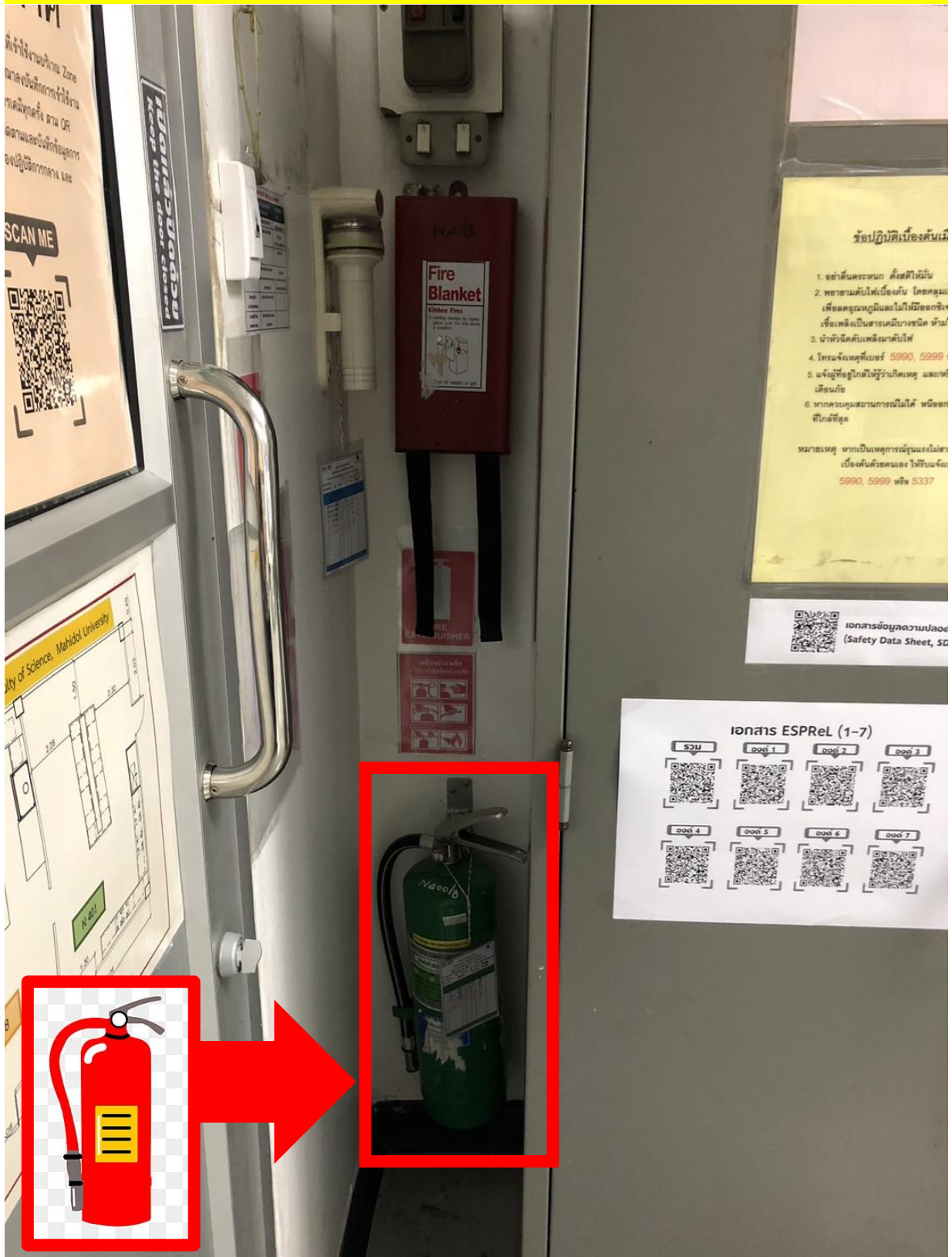
(Basic First Aid Kit/ Chemical Spill Kit#1)

Location: In front of Room, **Cabinet No. 29**



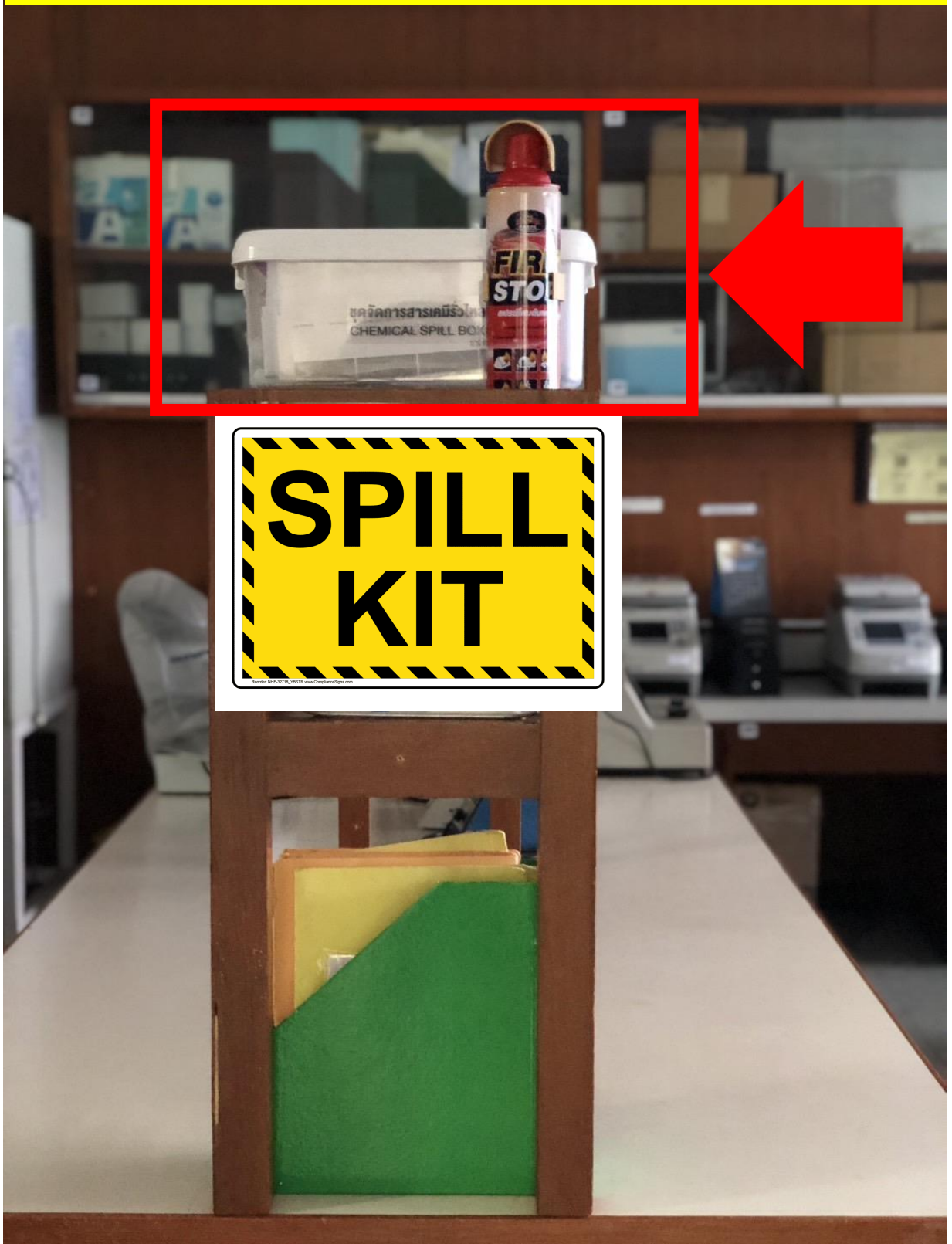
Fire Extinguisher

Location: In front of the room, **in the corner next to the entrance door.**



Chemical Spill Kit#2

Location: Near the connecting door entrance to Room N400/8



Ethidium bromide zone

Location: Near the window in the vicinity of Room N400/8.



Ethidium bromide zone

Location: Near the window in the vicinity of Room N400/8.



Ethidium bromide zone

Please log your entry and disposal of chemical-contaminated waste each time you access the Zone Ethidium Bromide area. Utilize the QR code below for tracking, recording incidents in the central laboratory, and conducting risk assessments.

SCAN ME



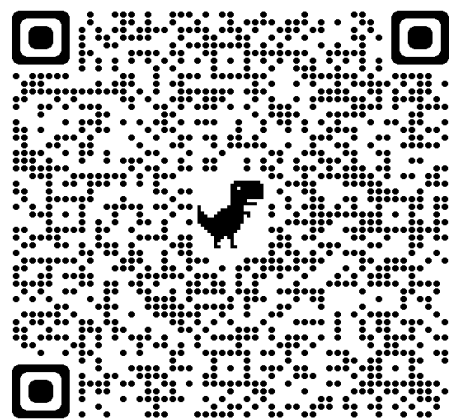
แบบฟอร์มส่งขยะสารเคมี
ห้องปฏิบัติการกลาง ภาควิชาชีววิทยา
คณะวิทยาศาสตร์ มหาวิทยาลัยมหิดล
(SCBI_waste disposal submission form)

SCAN ME

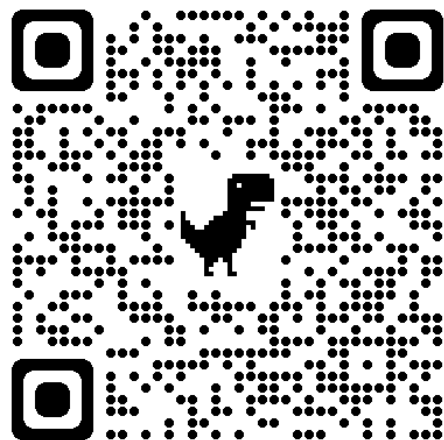


Scbi Online Booking System

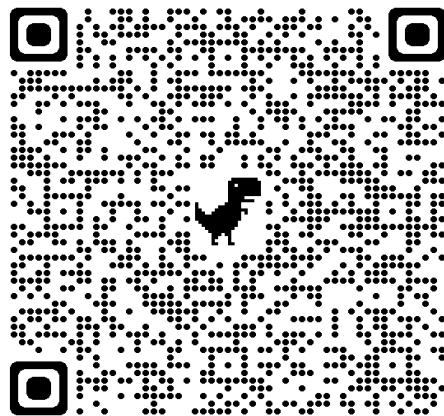
Check Usage in the Calendar



If the equipment is not in use, you can make a reservation.



After making the reservation successfully, please check it in the calendar.



In case of requesting cancellation of equipment usage, please notify the scientists at least 2 hours in advance by phone and fill out the cancellation form



For inquiries, contact 0818343925 (Assanee)